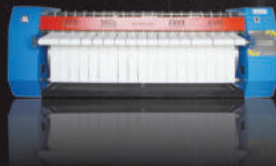




**N A G A R J U N**  
INTERNATIONAL TRADING COMPANY

*We Grow Together...*

**18**  
YEARS



AN ISO 9001 : 2015 CERTIFIED COMPANY

2023

INDUSTRIAL WASHING, FINISHING EQUIPMENTS & POWER LAUNDRY MACHINERIES

## Steam Boiler | Portable and Automatic



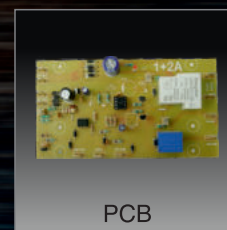
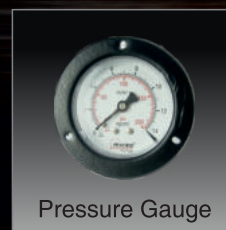
**Mechanism of Action :** A boiler or steam generator is a device used to create steam by applying heat energy to water. Although the definitions are somewhat flexible, it can be said that older steam generators were commonly termed boilers and worked at low to medium pressure but, at pressures above this, it is more usual to speak of a steam generator. A boiler or steam generator is used wherever a source of steam is required. The form and size depends on the application.

- Starfish offers a comprehensive selection of fully automatic and semi-automatic steam boilers designed to optimise power usage and space utilisation while prioritising safety and delivering precise steam output to the desired locations. With a diverse range of models available, these boilers can be tailored to meet specific application requirements.

- The portability of these steam generators ensures easy handling and convenient usage in various settings. These machines embody a compact design, guaranteeing reliability and user-friendliness. This line of steam boilers ensures complete safety, equipped with multiple safety mechanisms and an alarm system.

- The steam boilers are equipped with high-pressure diaphragm pumps. The heater elements, made of removable stainless steel, are safeguarded by thermostats and level controllers. Its also available with gas fired models. These boilers are available in a range of capacities and options. Not only are they cost-effective to own, but they are also simple to install, robustly built, and highly versatile.

- Experience seamless operation with minimal maintenance requirements, low power consumption, and a durable design.



## Steam Boiler | Portable and Automatic

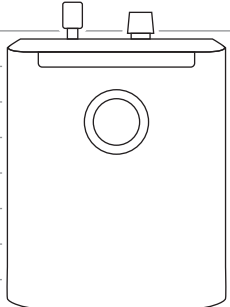
### PERFORMANCE

Heater	Submersible	<table border="1"> <thead> <tr> <th>Description</th> <th>KCAL</th> </tr> </thead> <tbody> <tr> <td>1 Kg Steam</td> <td>= 540</td> </tr> <tr> <td>1 Kilo Watt Power</td> <td>= 860</td> </tr> <tr> <td>1 Kg LPG</td> <td>= 11500</td> </tr> <tr> <td>1 Liter Diesel</td> <td>= 10000</td> </tr> </tbody> </table>	Description	KCAL	1 Kg Steam	= 540	1 Kilo Watt Power	= 860	1 Kg LPG	= 11500	1 Liter Diesel	= 10000
Description	KCAL											
1 Kg Steam	= 540											
1 Kilo Watt Power	= 860											
1 Kg LPG	= 11500											
1 Liter Diesel	= 10000											
Pump Motor	24 V Diaphragm											
Volt	415 / 3Ø or 220 / 1Ø											
Pressure Gauge	To Show Steam Pressure											
Low Water Indicator	To Protect heater											
Buzzer	Available											
Insulation	Fiber glass wool with Aluminum Lagging											
Control Panel	PCB											

### SAFETY

Pressure Switch	To Control Steam Pressure
Safety Cap	Work as Safety Valve

### CONSTRUCTION

Body	Mild Steel	
Boiler Shell	Stainless Steel 304 Grade	
Nipples	Brass	
Bottom Wheels	Optional	
Perforation	8 mm	
Gauge Connector	Silicon Bush	
Boiler Shell & Connectors	Stainless Steel 304 Grade	
Nuts, Bolts & Connectors	Mild Steel	
Cutting	CNC	
Bending	CNC	
Welding	Laser TIG/MIG	

### AESTHETIC

Overall Finish	Mild Steel with Powder Coated
Logo	Starfish Engraving with LED Lights

### TECHNICAL SPECIFICATION

Model	SSNANO	SSMIRO	SSMAX 2	SSMAX 3	SSMAX 4	SSMAX 6	SSMAX 9	SMAXG 3	SSMAXG 4	SSMAXG 6
Heating Method	Electric							Gas		
Operating Type	Manual		Automatic							
Heater in kw	1.5	2	2	3	4	6	9			
Steam Out Kg/hour	3	3	3	5	7	10	15	5	7	10
Water Storage in Liter	6L	8L	Auto Filling							
Water Pump in kw	-	-	0.13	0.13	0.13	0.13	0.13	0.13	0.13	0.13
Dimensions	380 x 350 x 470	380 x 375 x 520	380 x 375 x 625	380 x 375 x 625	445 x 400 x 720	445 x 400 x 720	445 x 400 x 720	430 x 425 x 700	495 x 450 x 795	495 x 450 x 795

### GENERAL

Net Calorific Value %	90%									
Water Inlet in mm	25	25	10	10	10	10	10	10	10	10
Drain Outlet in mm	12	12	6	6	12	12	12	6	12	12
Foundation	Not Required									
Weight in kg	10	13	18	18	21	22	23	22	26	27



**Head Office :**

3/869-A, Ground Floor, Moolakadai,  
Nochipalayam Pirivu, Palladam Main Road,  
Veerapandi (Post), TIRUPUR - 641605,  
TAMILNADU, INDIA  
Ph: +91-421- 4333009, 4330009, 4333678

**Corporate Office :**

Ground Floor, #13, K.V.R. Arcade, 2<sup>nd</sup> Main Road,  
3<sup>rd</sup> Block, Behind Gokuldas Images,  
Goraguntepalya, BENGALURU - 560022,  
KARNATAKA, INDIA  
Ph: +91 080 41507898



+91 934 57 57 898



sales@nagarjun-itc.com



www.starfishindia.com