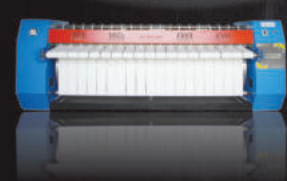




**N A G A R J U N**  
INTERNATIONAL TRADING COMPANY  
*We Grow Together...*

**18**  
YEARS



AN ISO 9001 : 2015 CERTIFIED COMPANY

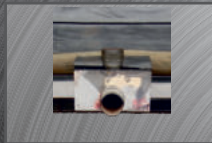
2023

INDUSTRIAL WASHING, FINISHING EQUIPMENTS & POWER LAUNDRY MACHINERIES

## Top Loading Washing Machine | Standard



Motor Pulley



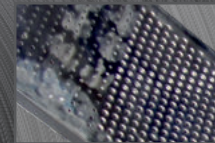
Heater Box  
(Optional)



Gear Box  
(Optional)



Panel Board



Perforation

### What is Washing Machine?

A washing machine (laundry machine, clothes washer, washer, or simply wash) is used for laundering clothes.

The term primarily refers to machines that use water for cleaning purposes, as opposed to dry cleaning (which employs alternative cleaning agents and is conducted by specialised businesses) or ultrasonic cleaners.

The user adds laundry detergent, available in liquid or powder form, to the washing water.

- The Top Loading Laundry Machine features a high-quality stainless steel inner and outer basket, with an optional 316 grade for dyeing.
- These economically-priced units suit various laundry, textile processing, and dyeing applications.

- They are available in Steam, Electric, and Thermic fluid options.
- Heating and Water level are controlled through Electric and Pneumatic solenoid valves (optional).
- The precisely calibrated sight gauge glass allows easy observation, even while the machine is operational.

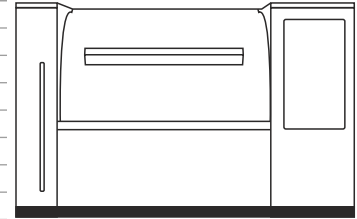
Our primary objective in designing this machine is to:

- Reduce water consumption.
- Minimise steam usage.
- Optimise processing time while increasing loading capacity.
- Enhance durability.
- Decrease reliance on manpower.

## Top Loading Washing Machine | Standard

### PERFORMANCE

Motor Brand	ABB/Equivalent
Volt	415 / 3Ø
Rpm	32
VFD(Optional)	Adjustable Drum Rotation 0-32 RPM
Forward/reverse	Adjustable 0-60 Seconds
Beaters	To improve wash Quality
Washing Time	0-60 min controlled by Timer
Temperature	0-60° Controlled by Digital Temperature Sensors
Control panel	Manually Operated by Switch
Water level	See through Gauge glass



### SAFETY

Door Open Cut Off	Limit Switch
-------------------	--------------

### CONSTRUCTION

Outer Drum	Stainless Steel 304 Grade
Inner Drum	Stainless Steel 304 Grade
Perforation	Punch Press
Side Cover	Stainless Steel 202 Grade
Side Panels	Mild Steel Plate Covered by Stainless Steel 202 Sheet
Base Frame	Mild Steel Channel
Door	Stainless Steel 304 Grade
Belt Adjustment	Screw Rod
Shaft Gland	Bearing with Gland Covered by Asbestos Rope
Nuts, Bolts And Connectors	Mild Steel
Drum and Side panel Joint	By using Asbestos Sheet
Control Box	Mild Steel with Knob
Safety Mesh	Mild Steel
Cutting	CNC
Bending	CNC
Welding	MIG/TIG

### AESTHETIC

Overall Finish	Gloss
Logo	Standard Sticker

### GENERAL

Model	STW 15	STW 30	STW 50	STW 100	STW 150
Dry Weight in Kg	15	30	50	100	150
Drum Size in mm	Ø550 x 700	Ø750 x 960	Ø910 x 1130	Ø1120 x 1500	Ø1120 x 2450
Drum Volume in Liter	166	423	735	1487	2412
Liquor Ratio	1:14				
Over All Dimension in mm	1300 x 730 x 980	1560 x 890 x 1100	1930 x 1110 x 1300	2520 x 1300 x 1350	3350 x 1400 x 1350
Door Open in mm	500 x 300	560 x 360	620 x 410	810 x 460	810 x 460 x 2 Nos

### TECHNICAL SPECIFICATION

	15	30	50	100	150
Steam Consumption Kg/Hr	15	30	50	100	150
Water Inlet in mm	25	25	37	50	75
Drain Outlet in mm	65	75	75	100	150
Heater in kw	6	9	18	24	-
Weight in Kgs	300	500	700	900	1300
Motor Power in kw	0.75	1.2	1.5	4	7.5
Double Drain	Optional				
Foundation	Not Required				



**Head Office :**

3/869-A, Ground Floor, Moolakadai,  
Nochipalayam Pirivu, Palladam Main Road,  
Veerapandi (Post), TIRUPUR - 641605,  
TAMILNADU, INDIA  
Ph: +91-421- 4333009, 4330009, 4333678

**Corporate Office :**

Ground Floor, #13, K.V.R. Arcade, 2<sup>nd</sup> Main Road,  
3<sup>rd</sup> Block, Behind Gokuldas Images,  
Goraguntepalya, BENGALURU - 560022,  
KARNATAKA, INDIA  
Ph: +91 080 41507898



+91 934 57 57 898



sales@nagarjun-itc.com



www.starfishindia.com